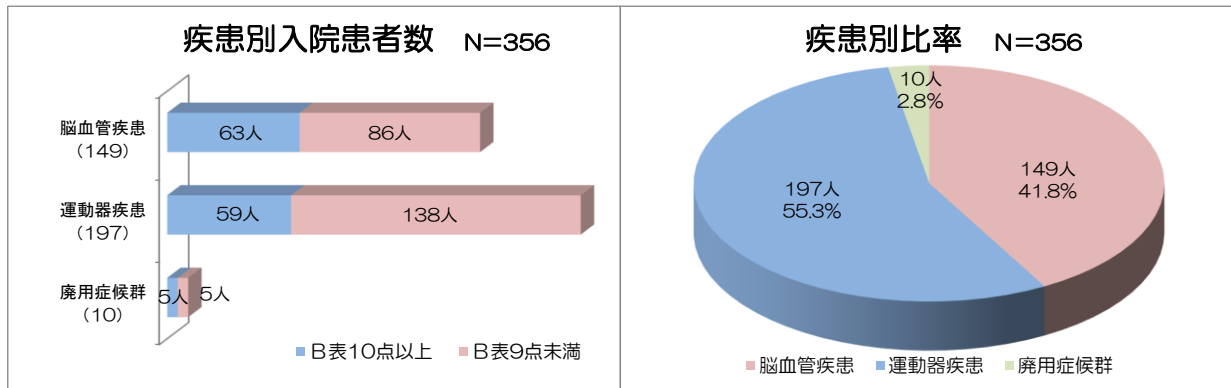


# 2018年度4-3月 入院実績

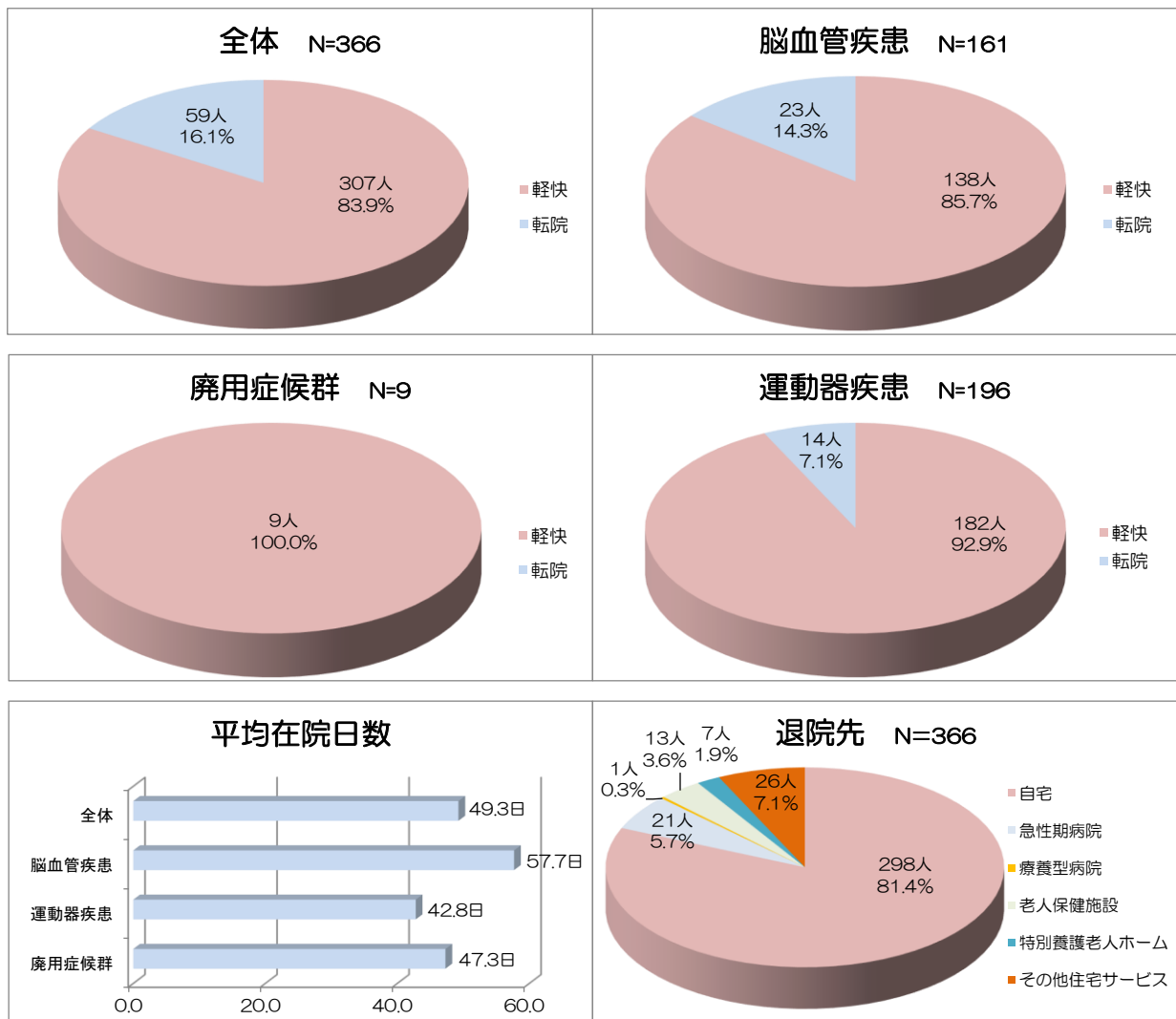
## 入院患者受入状況



入院患者様1人1日当たりリハビリテーション提供単位数 (2018年4月 - 2019年3月平均)

|       |        |
|-------|--------|
| 脳血管疾患 | 8.2 単位 |
| 運動器疾患 | 7.7 単位 |
| 廃用症候群 | 8.0 単位 |

## 退院患者行先状況



## 2018年度 回復期リハビリテーション病棟入院料1の施設基準における数値

| 2018年度      | 施設基準                    |       | 4月    | 5月     | 6月    | 7月     | 8月     | 9月     | 10月   | 11月   | 12月   | 1月    | 2月     | 3月    | 合計     | 平均   |
|-------------|-------------------------|-------|-------|--------|-------|--------|--------|--------|-------|-------|-------|-------|--------|-------|--------|------|
| 入院患者数(再入院含) |                         |       | 32    | 30     | 30    | 28     | 32     | 32     | 33    | 31    | 32    | 31    | 21     | 24    | 356    | 29.7 |
| 新入院患者数      |                         |       | 32    | 29     | 28    | 28     | 32     | 31     | 32    | 31    | 31    | 30    | 20     | 23    | 347    | 28.9 |
| A項目1点以上数    | 新入院に対し<br>5%以上          | 患者数   | 4     | 2      | 2     | 1      | 4      | 2      | 5     | 1     | 4     | 4     | 2      | 4     | 35     | 2.9  |
|             |                         | 単月比率  | 12.5% | 6.9%   | 6.7%  | 3.6%   | 12.5%  | 6.3%   | 15.6% | 3.2%  | 12.9% | 13.3% | 10.0%  | 17.4% | 9.8%   |      |
|             |                         | 累計比率  | 11.5% | 11.5%  | 10.6% | 8.3%   | 8.6%   | 8.2%   | 8.9%  | 8.2%  | 9.2%  | 10.7% | 10.3%  | 12.0% |        |      |
| B項目10点以上数   | 新入院に対し<br>30%以上         | 患者数   | 10    | 10     | 10    | 9      | 10     | 10     | 11    | 11    | 12    | 16    | 7      | 4     | 120    | 10.0 |
|             |                         | 単月比率  | 31.3% | 34.5%  | 33.3% | 32.1%  | 31.3%  | 31.3%  | 34.4% | 35.5% | 38.7% | 53.3% | 35.0%  | 17.4% | 33.7%  |      |
|             |                         | 累計比率  | 34.6% | 35.2%  | 33.5% | 33.9%  | 34.1%  | 32.1%  | 33.3% | 33.5% | 34.1% | 37.4% | 38.3%  | 36.5% |        |      |
| 重症患者退院数     |                         | 患者数   | 12    | 9      | 11    | 10     | 10     | 13     | 12    | 8     | 9     | 14    | 12     | 14    | 134    | 11.2 |
| B項目4点以上改善数  | 重症患者<br>退院数に対し<br>30%以上 | 患者数   | 10    | 8      | 9     | 5      | 7      | 12     | 9     | 5     | 8     | 12    | 10     | 9     | 104    | 8.7  |
|             |                         | 単月比率  | 83.3% | 88.9%  | 81.8% | 50.0%  | 70.0%  | 92.3%  | 75.0% | 62.5% | 88.9% | 85.7% | 83.3%  | 64.3% | 77.6%  |      |
|             |                         | 累計比率  | 67.7% | 71.4%  | 77.0% | 73.4%  | 72.6%  | 78.5%  | 76.9% | 73.4% | 74.2% | 80.3% | 82.4%  | 76.8% |        |      |
| 退院患者数       |                         | 患者数   | 30    | 29     | 34    | 26     | 30     | 36     | 33    | 27    | 34    | 35    | 24     | 28    | 366    | 30.5 |
| 内、再&急性期退院   |                         | 患者数   | 1     | 2      | 3     | 3      | 1      | 3      | 1     | 1     | 2     | 5     | 2      | 3     | 27     | 2.3  |
| 新退院患者数      |                         | 患者数   | 29    | 27     | 31    | 23     | 29     | 33     | 32    | 26    | 32    | 30    | 22     | 25    | 339    | 28.3 |
| 自宅等退院数      |                         | 患者数   | 28    | 27     | 30    | 23     | 29     | 33     | 31    | 24    | 29    | 27    | 22     | 23    | 326    | 27.2 |
| 在宅復帰率       | 70%以上                   | 単月比率  | 96.6% | 100.0% | 96.8% | 100.0% | 100.0% | 100.0% | 96.9% | 92.3% | 90.6% | 90.0% | 100.0% | 92.0% | 96.2%  |      |
|             |                         | 累計比率  | 97.6% | 97.6%  | 97.0% | 97.6%  | 98.2%  | 98.8%  | 98.9% | 97.7% | 96.6% | 95.1% | 94.9%  | 93.4% |        |      |
| アウトカム評価     | 37以上                    | 単月指数  | 54.2  | 50.7   | 56.2  | 33.7   | 54.1   | 53.0   | 44.3  | 43.6  | 42.9  | 43.7  | 41.7   | 42.2  | 46.96  |      |
|             |                         | 6ヶ月指数 | 41.4  | 44.6   | 47.9  | 46.9   | 47.5   | 50.1   | 48.6  | 47.6  | 45.2  | 46.7  | 45.1   | 43.2  |        |      |
| 平均在院日数      | 69.3日間 ※                | 単月比率  | 49.5  | 53.2   | 46.8  | 53.3   | 51.4   | 43.9   | 46.4  | 51.9  | 47.0  | 46.2  | 58.2   | 48.3  | 49.3日間 |      |
| 脳血管疾患       | 85.4日間 ※                | 単月比率  | 58.8  | 70.0   | 43.9  | 83.2   | 54.0   | 48.7   | 55.8  | 50.5  | 64.2  | 54.4  | 71.8   | 59.5  | 57.7日間 |      |
| 廃用症候群       | 55.1日間 ※                | 単月比率  | 28.0  | —      | 14.0  | 78.0   | 56.0   | 28.0   | 39.0  | 21.0  | —     | —     | 42.7   | 154.0 | 47.3日間 |      |
| 運動器疾患       | 56.2日間 ※                | 単月比率  | 43.3  | 38.1   | 54.5  | 35.9   | 47.4   | 39.5   | 40.8  | 54.7  | 38.9  | 40.6  | 49.0   | 38.4  | 42.8日間 |      |
| 疾患別比率(脳)    |                         | 単月比率  | 53.4% | 53.2%  | 51.5% | 54.4%  | 59.2%  | 57.1%  | 45.5% | 38.5% | 43.2% | 47.9% | 51.9%  | 45.0% | 50.1%  |      |
| (廃)         |                         | 単月比率  | 2.7%  | 3.9%   | 1.5%  | 2.7%   | 3.5%   | 2.0%   | 2.5%  | 1.5%  | 0.0%  | 0.0%  | 4.8%   | 6.1%  | 2.5%   |      |
| (運)         |                         | 単月比率  | 43.8% | 42.9%  | 47.0% | 43.0%  | 37.3%  | 40.9%  | 52.0% | 60.0% | 56.8% | 52.1% | 43.3%  | 48.9% | 47.3%  |      |

※回復期リハビリテーション病棟協会資料「原因疾患別 入棟日数」の平成29年度実績より